

# Hen Mpoano



## Towards a Community-Based Management Plan for Ankobra River Estuarine Fishery

**Cephas Asare & Stephen Kankam**

**Hen Mpoano**

**Conference on Fisheries and Coastal Environment, 25<sup>th</sup> – 27<sup>th</sup> Sept. 2017**

# Outline

1. Introduction
2. Goal
3. Objective
4. Approach
5. Outcomes
6. Conclusion

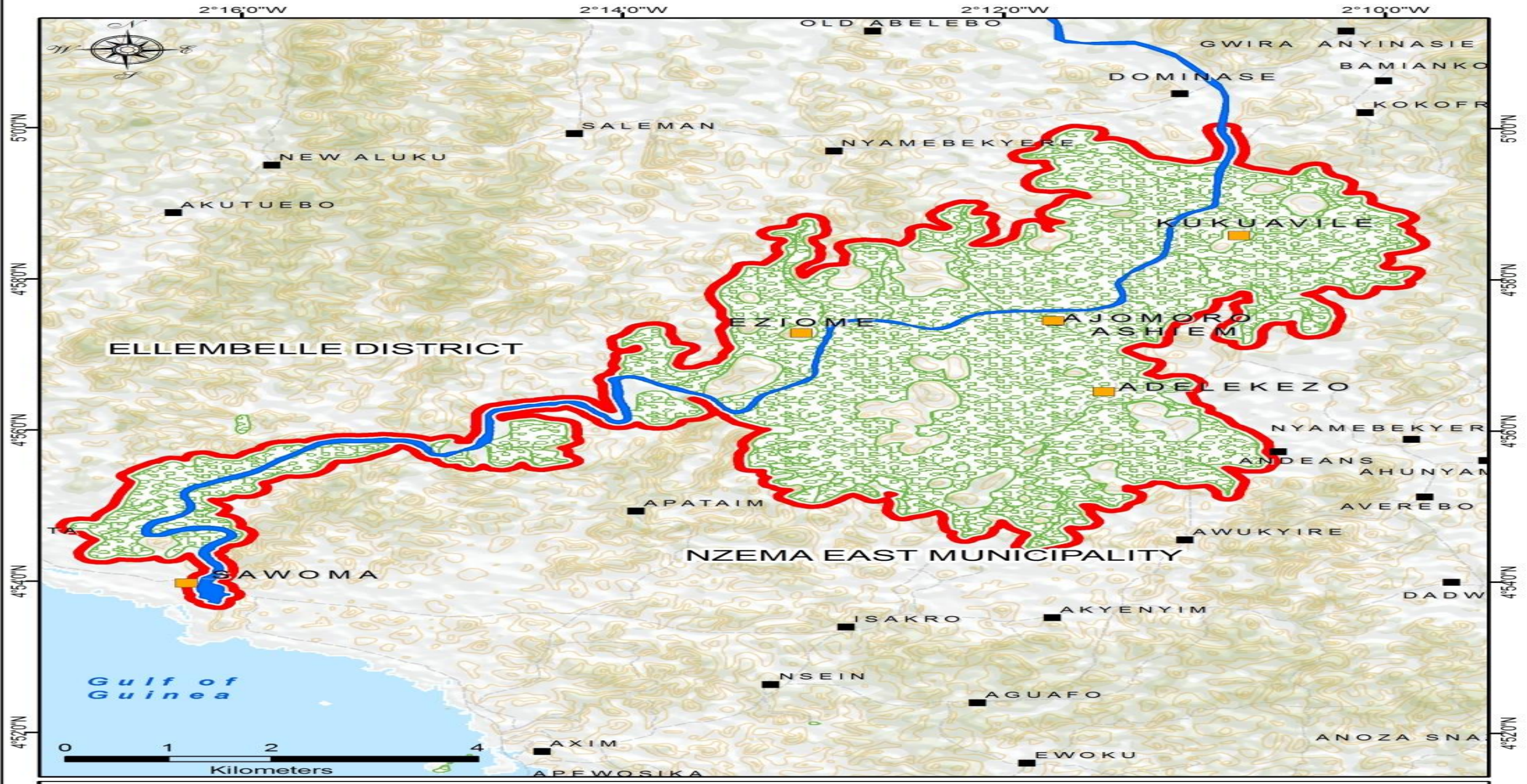
# Introduction

Co-management or collaborative management is a promising means of improving resource conditions, particularly, where centralized fisheries management is a challenge. In collaborative management, authority and responsibility for managing fisheries resources are shared between government and resource users. A pilot community-based fisheries management planning process for the Ankobra River estuary was initiated under the auspices of the USAID-funded Sustainable Fisheries Management Project (SFMP).

# Introduction

The Ankobra River Basin is located between latitude  $4^{\circ} 50' N$  and  $6^{\circ} 30' N$  and longitude  $1^{\circ} 50' W$  and  $2^{\circ} 30' W$ . It belongs to the Western River System and covers an area of about 8,460 km<sup>2</sup>. The river takes its source from the hills north of Basindare (near Bibiani) and flows for about 260 km mostly due south before it enters the Gulf of Guinea at Sanwoma, a few kilometres west of Axim. The basin is bounded to the east by the Pra Basin, to the north and west by the Tano Basin and in the south-east by the small coastal Butre Basin.





**ANKOBRA COMMUNITY BASED FISHERY MANAGEMENT AREA**

-  Management Area (5078 ha)
-  Target Communities
-  Ankobra River
-  Wetlands



# Goal

An integrated community fisheries management and resilience plans for the Ankobra river estuarine and mangrove ecosystem

# Objectives

1. Build local community capacity in development and implementation of community-based fisheries management and mangrove protection
2. Develop a model process and management plan for estuarine fisheries management that will serve as model for similar management units in Ghana
3. Develop an ecosystem-based fisheries management and community resilience plan for the Ankobra river estuarine ecosystems
4. Facilitate the establishment of a permanent community-based management committee

# Approaches

To accomplish our goal, we adopted a suit of participatory approaches:

- i. Assessments – Climate vulnerability, Spatial options analysis, resource and use pattern, fish inventory (27 spp.) and Participatory Rural Appraisal
- ii. Early actions – boat construction, VSLA, mangrove replanting
- iii. Trainings – resource management, communications, advocacy and conflict management



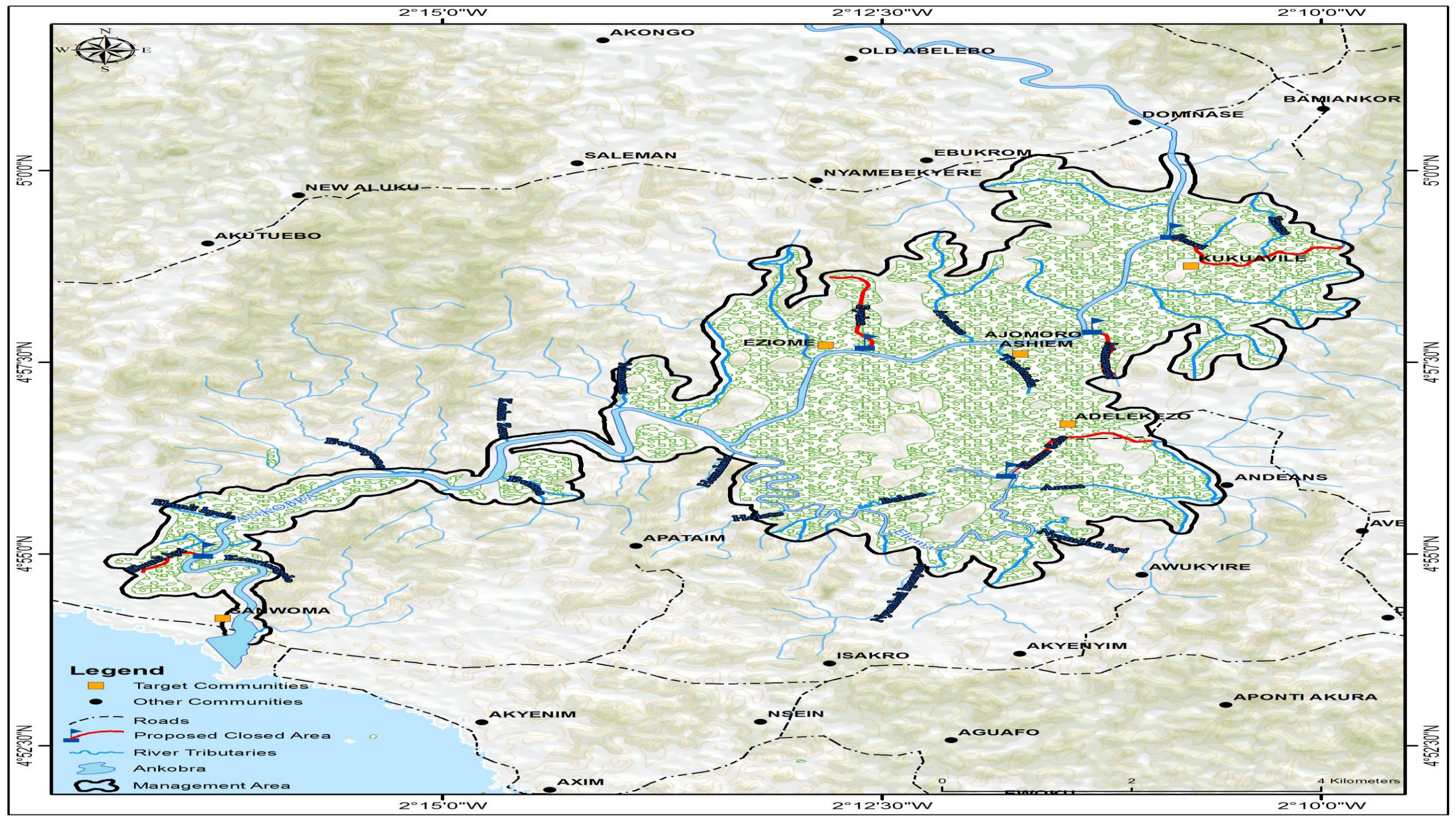
# Outcomes

- Community-based fisheries management committee established
- Draft management plan developed
- Management actions e.g., closed season and areas developed and ready to be implemented by October 2017
- 18.4 hectares of degraded mangrove restored

# Spatial option analysis









# The 3 Priority Species



**Bagrid Catfish: Kondolo**



**Tilapia: Ekpoke**

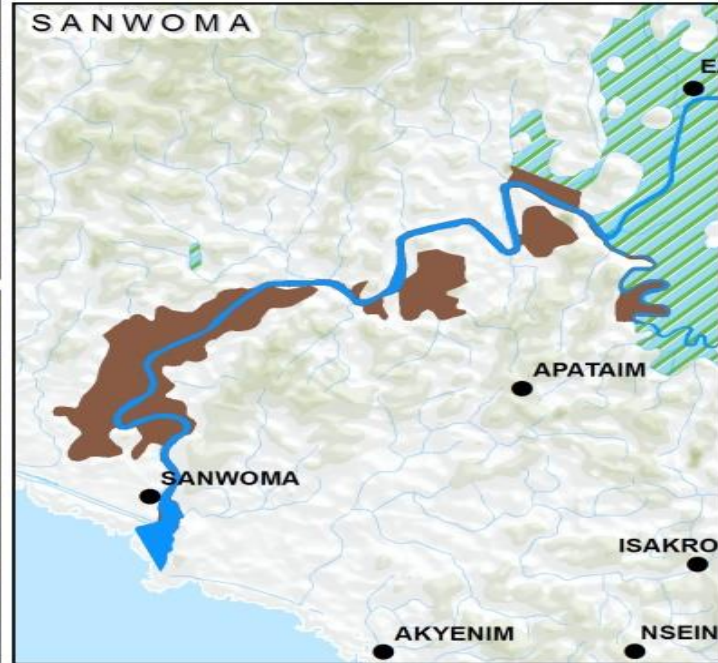
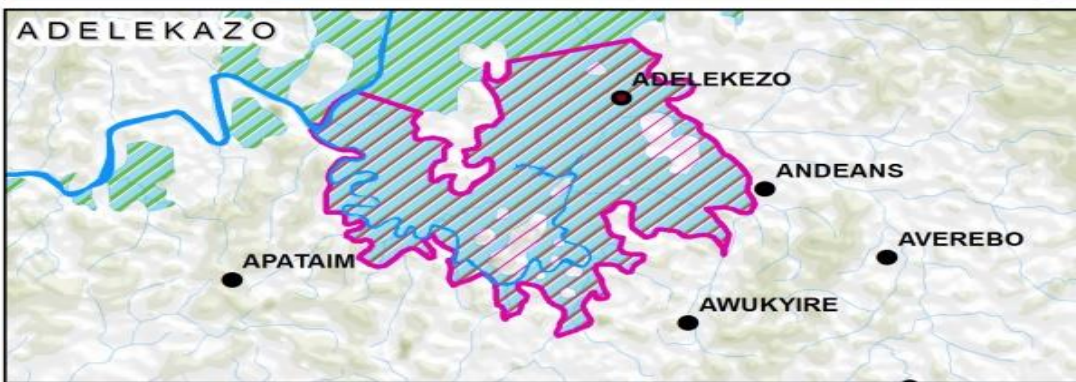
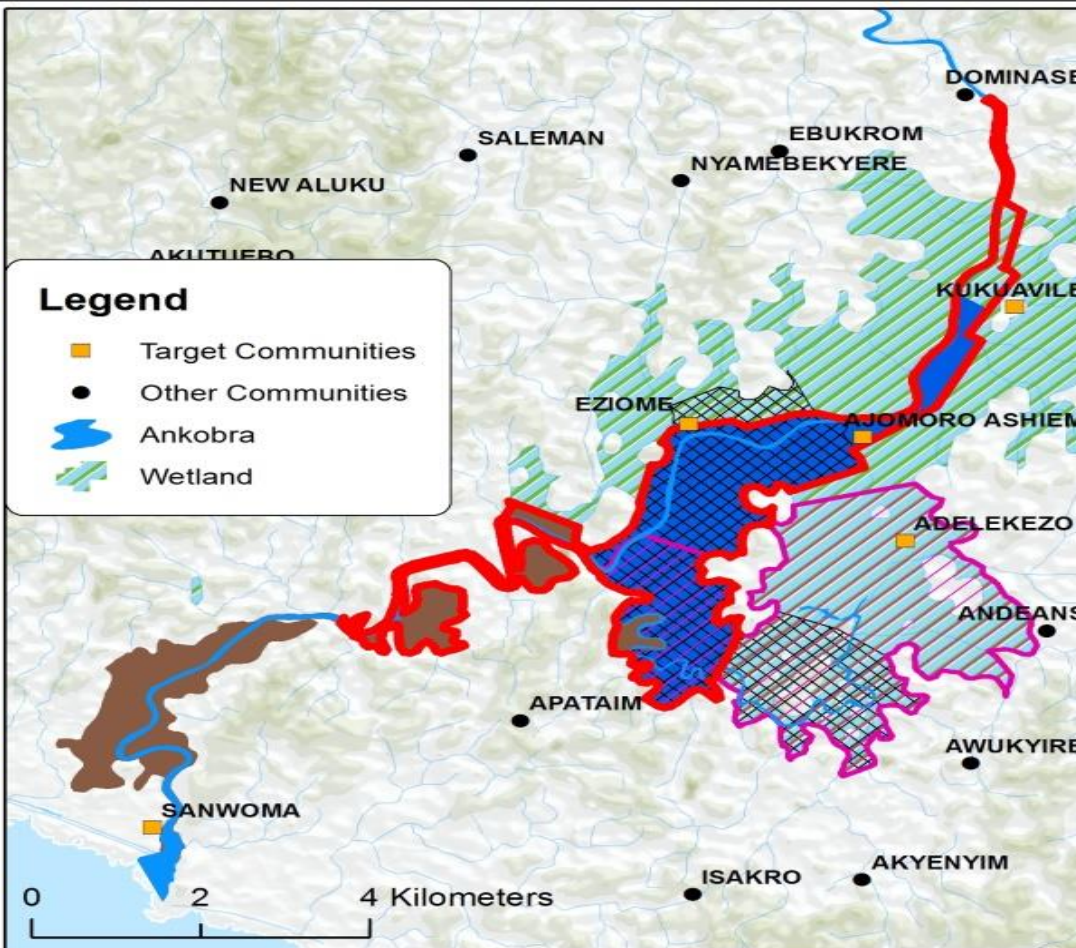
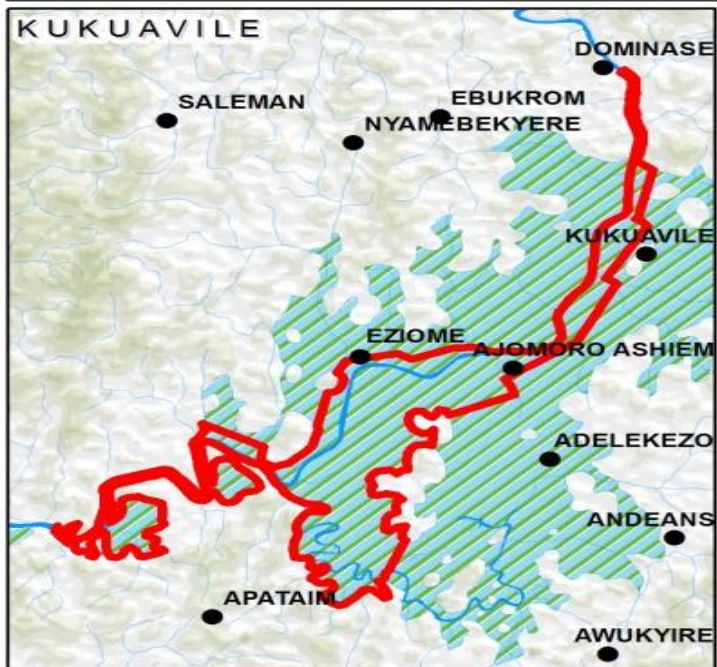


**Cassava croaker: Kenang**

**Hen Mpoano**

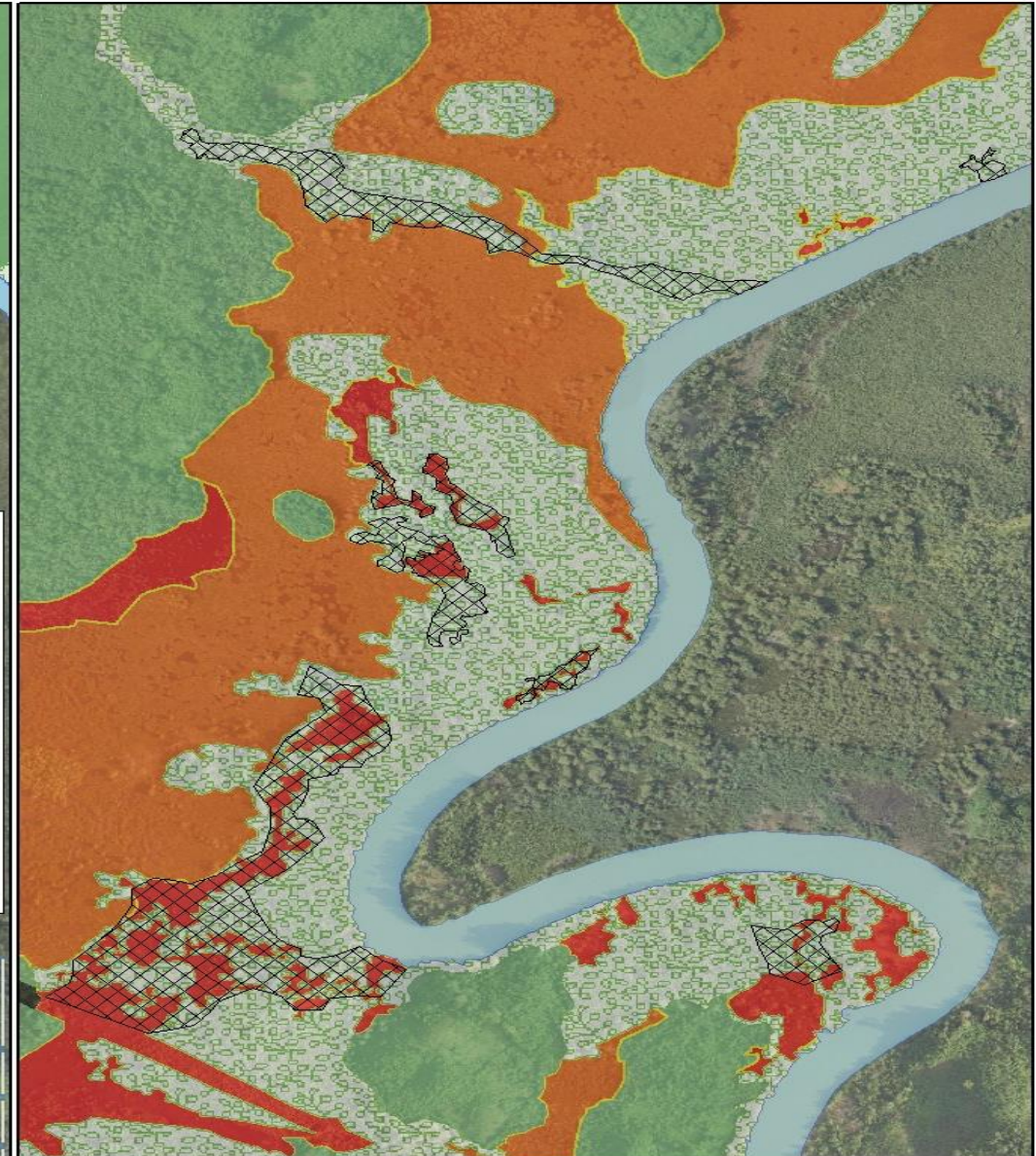
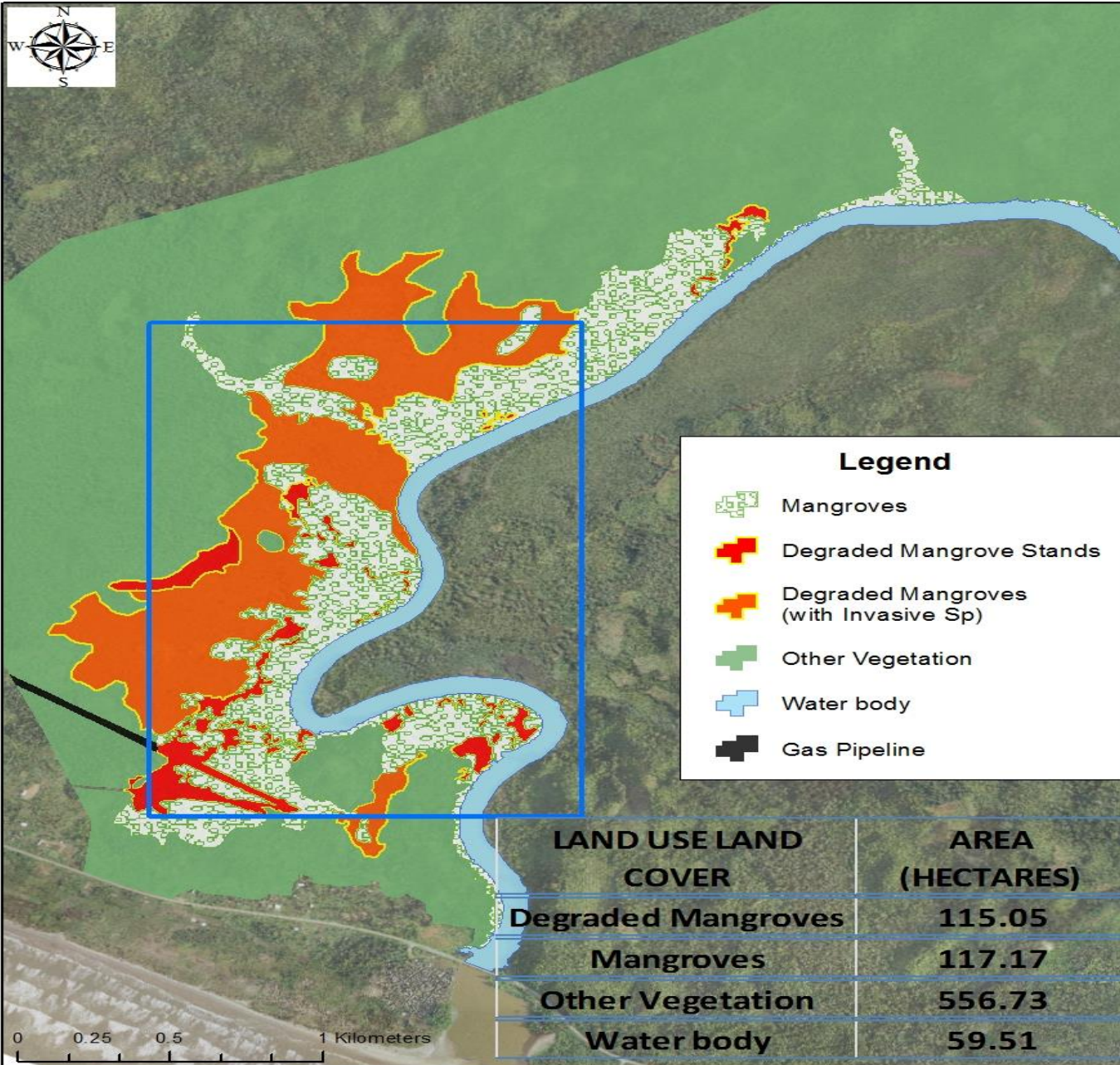


# FISHING GROUNDS OF FIVE ESTUARINE COMMUNITIES





# SANWOMA MANGROVE RESTORATION



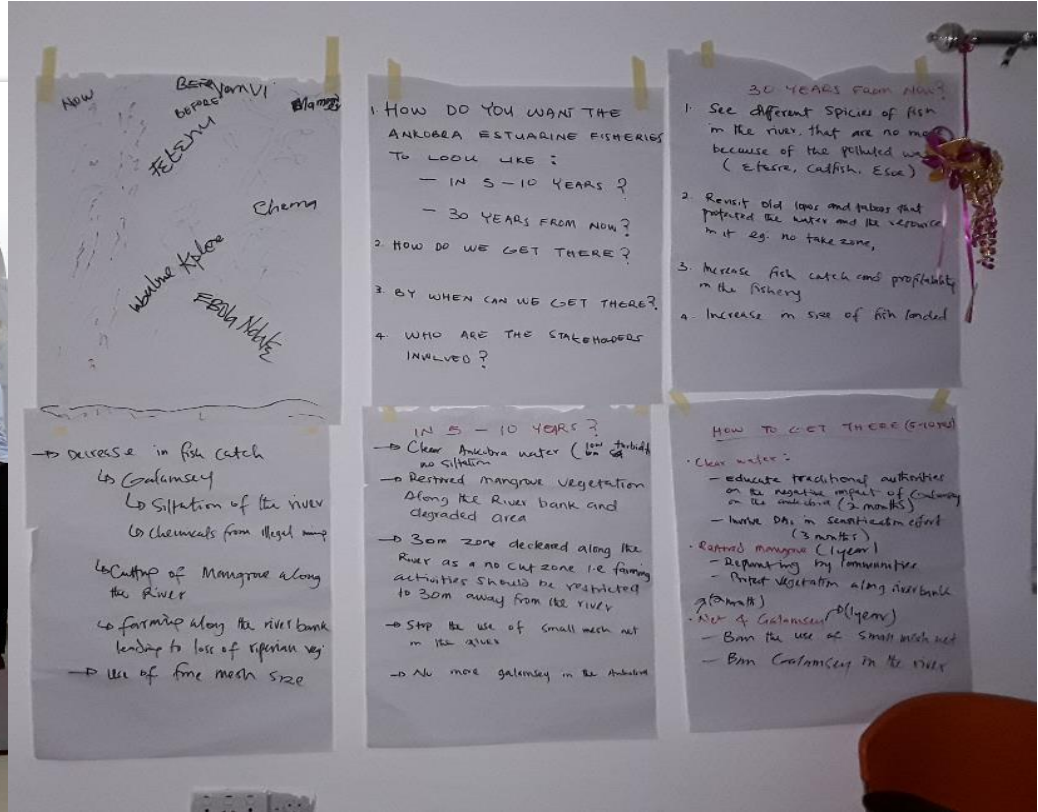
Restored area (18.4 hectares)

Produced by

**Hen Mpoano**



# Visioning Training



Hen Mpoano

# Meeting to Develop Management Actions



**Hen Mpoano**



# Election of male and female representative on the CBFM Committee



**Hen Mpoano**

# Vision For Ankobra Fishery

we, the five (5) Ankobra river estuarine communities have agreed to collectively work and partner with other stakeholders to ensure that our estuarine fishery which has been our heritage is sustained for future generations.

# Conclusion

Community-based fisheries management can be an effective tool for small system fisheries management if resource users interest are genuinely addressed.



# Acknowledgement

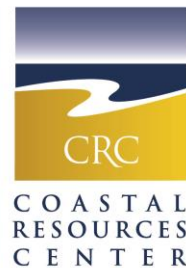


**USAID**  
FROM THE AMERICAN PEOPLE



**MOFAD**  
MINISTRY OF FISHERIES AND  
AQUACULTURE DEVELOPMENT

THE  
UNIVERSITY  
OF RHODE ISLAND  
GRADUATE SCHOOL  
OF OCEANOGRAPHY



**UNIVERSITY OF  
CAPE COAST**

**Hen Mpoano**



# Thank You



**Hen Mpoano**